

## RBI Shield™

REFLECTIVE BARRIER

Comfort and Energy Solutions. It's our Business.

### TOOLS YOU WILL NEED



- Scissors or Razor Knife
- Tape Measure
- Hammer
- Squeegee
- Scaffolding/Power Lift
- Power Drill
- T-Square
- Side Cutters

### SUPPLIES YOU WILL NEED

- Foil or White Tape
- Drywall Screws
- Self Taping Screws
- Tap Cons

### INSTALLATION TIPS

1. Note purlins on-center widths. Smaller sections are typically at sides and the ridge.
2. Note the type of purlins and type of clips needed.
3. Plan for obstructions.

#### NOTE:

Use caution when working with pins - the ends are very sharp. Safety glasses and other applicable safety measures should be used when installing the system. Refer to standard and local safety requirements.

#### Cleaning:

1. Windex or other similar ammonia based cleaner
2. Mild soap and water solution

#### Avoid cleaning with:

1. Mineral oils and any type of hydrocarbon
2. Bleach
3. Power sprayers

\* Refer to ASTM C-727, Standard Practice for Installation and Use of Reflective Insulation in Building Constructions, for other installation considerations.

#### Proper Storage:

Store insulation material in a dry covered facility away from temperature extremes and weather elements.

#### Handling:

Protect material during handling and installation to prevent damage.

#### Re-Installation:

Product is not covered by the product warranty.

## Reflective Bubble Insulation (RBI)

Rev. 3/2014

### PRE-ENGINEERED STEEL BUILDINGS

#### Roof Application

1. This application is suitable for Z & C Purlins.
2. Measure working area where RBI Shield™ will be applied.
3. Drape the RBI Shield™ across the tops of the purlins allowing enough material to sag so that a 3/4" to 1 1/2" airspace is achieved.
4. Run the RBI Shield™ from top of side wall across the purlins to the opposite side wall using double sided tape to hold to metal.
5. Continue from one end of building to the opposite sealing seams with the integrated tape tab or folding up edges and stapling every 4" to 8" if using staple tab.
6. Install the steel roof deck using approved methods of installation.



#### Side Wall Application

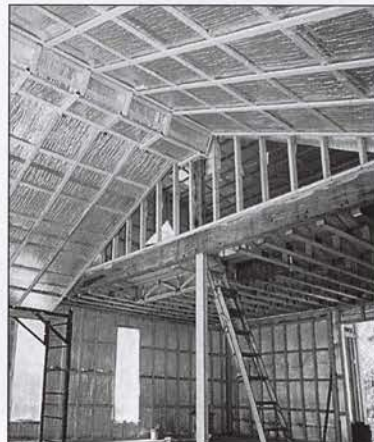
1. This application is suitable for Z & C Purlins.
2. Measure working area where RBI Shield™ will be applied.
3. Drape the RBI Shield™ from top of wall to bottom securing with double sided tape to the metal.
4. Continue from end of side wall to opposite end sealing seams with the integrated tape tab or folding up edges and staple every 4" to 8" if using staple tab.
5. Install the steel wall panels using approved methods of installation.



### AGRICULTURAL BUILDING ROOF

#### Roof Application

1. This application is suitable for wood purlins.
2. Measure working area where RBI Shield™ will be applied.
3. Drape the RBI Shield™ across the tops of the purlins allowing enough material to sag so that a 3/4" to 1 1/2" airspace is achieved.
4. Run the RBI Shield™ from top of side wall across the purlins to the opposite side wall using staples to hold to the wood.
5. Continue from one end of building to the opposite sealing seams with the integrated tape tab or folding up edges and stapling every 4" to 8" if using staple tab.
6. Install the steel roof deck using approved methods of installation.



RBI Shield™ Reflective Bubble Insulation Installation

**CAUTION:** Do not install this insulation in an area where it will or could be exposed to exterior elements including, but not limited to direct sunlight (i.e., including under skylights), water, moisture, and/or intense heat. Do not install this insulation in open-air buildings (i.e., a structure having no side walls or partial side walls) - the building should have four sides. The insulation can be installed in buildings with operable garage doors as an exception - buildings with operable garage doors, other doors, or windows, provided that the building is otherwise enclosed and the insulation is not exposed to direct sunlight, water, moisture, and/or intense heat. Should you have any questions about the application, please contact our factory at 1-800-448-3401.